

21/02439/FUL

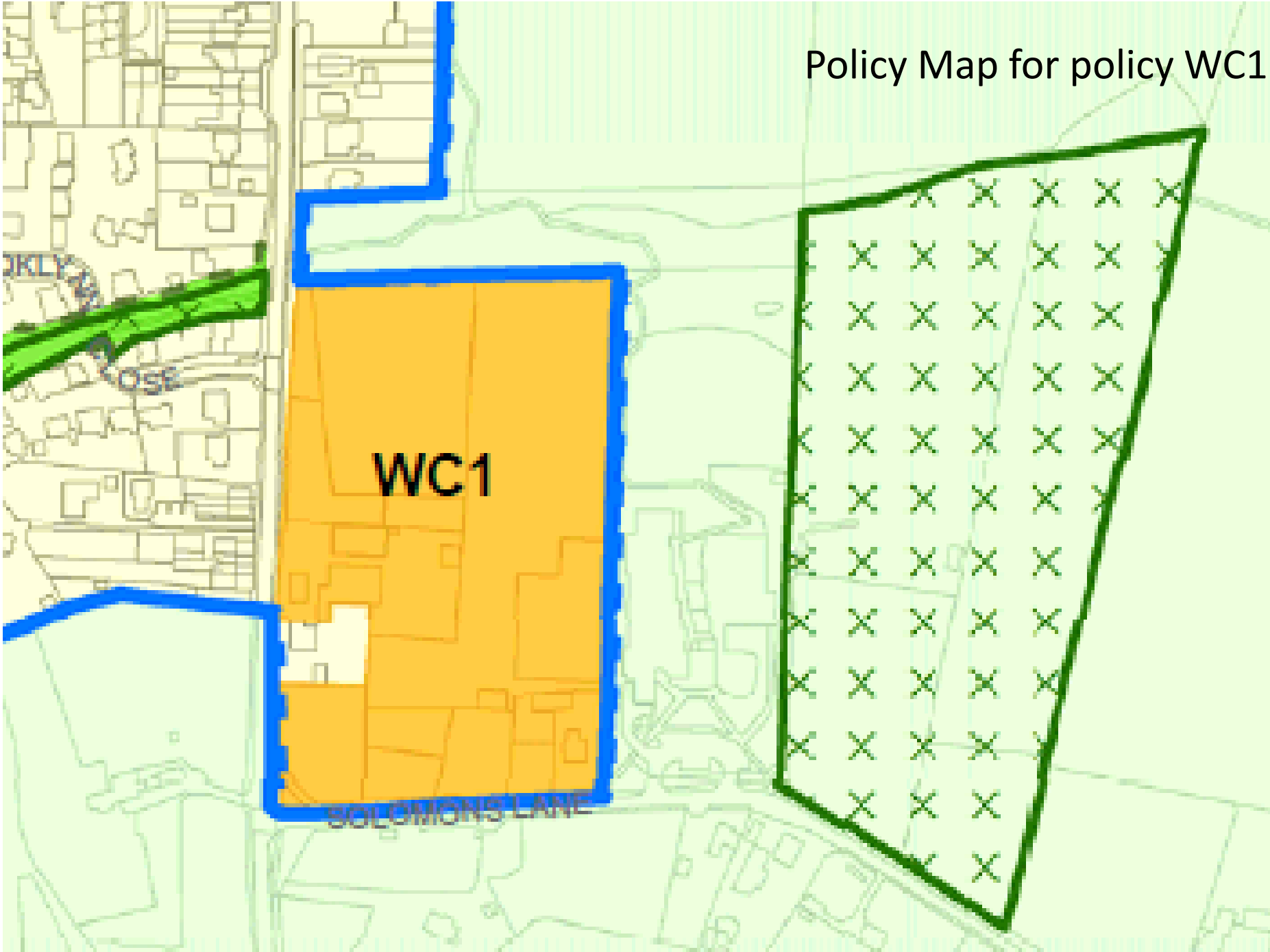
Land At Solomons Lane, Solomons Lane, Waltham Chase, Hampshire

Full planning permission for 80 dwellings, 716sq.m of Class E commercial space comprising Class E(c) - (financial and professional services), E (e) (medical or health services) and E (g) (uses which can be carried out in a residential area without detriment to its amenity including industrial processes), related vehicle access from Solomons Lane (residential) and Winchester Road (single access to serve 8 properties, and commercial), separate pedestrian/cycle access from Winchester Road, open space and play space, landscaped buffer to Waltham Chase Meadows Site Scientific Interest (SSSI) , parking, landscaping and drainage infrastructure.

(Amended Description)



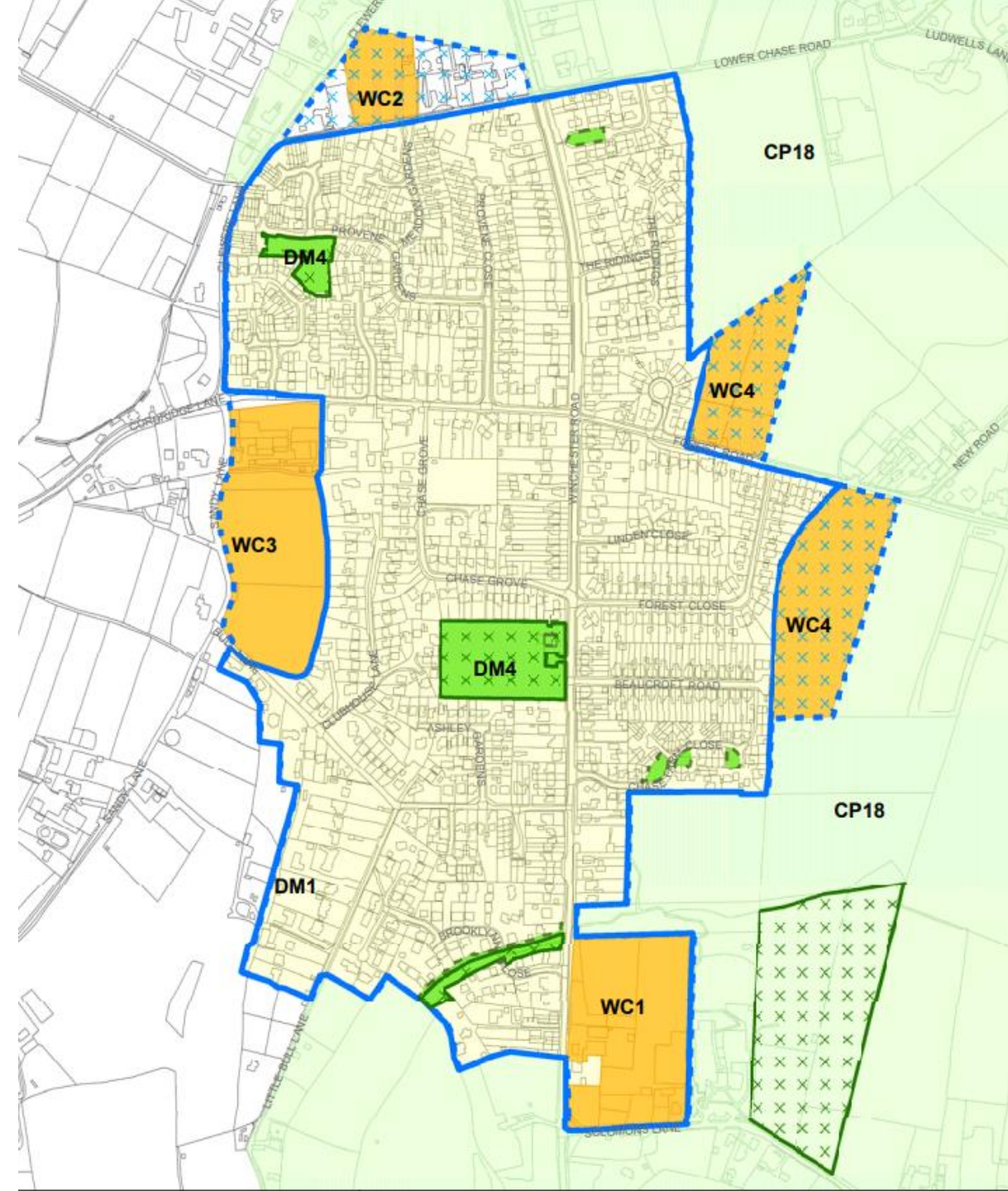
Policy Map for policy WC1



WC1

SOLOMONS LANE

OSR



Policy Map for the whole of Waltham chase.



KEY



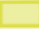



- Site boundary
- Existing site accesses
- Indicative Swale connections
- Stream
- Existing foul drains route
- Existing local footpaths
- SSSI
- Location of potential future open space (WC1)
- Tree canopies and protection zones
- TPO row of Conifers - Removed
- Village Hall
- Primary School (St John the Baptist-CoE)



- KEY**
- Site boundary
 - ➔ Existing site accesses
 - ⋯ Indicative Swale connections
 - ➔ Stream
 - ⋯➔ Existing foul drains route
 - ➔ Existing local footpaths
 - SSSI
 - Location of potential future open space (WC1)
 - Tree canopies and protection zones
 - TPO row of Conifers - Removed
 - Village Hall
 - Primary School (St John the Baptist-CoE)

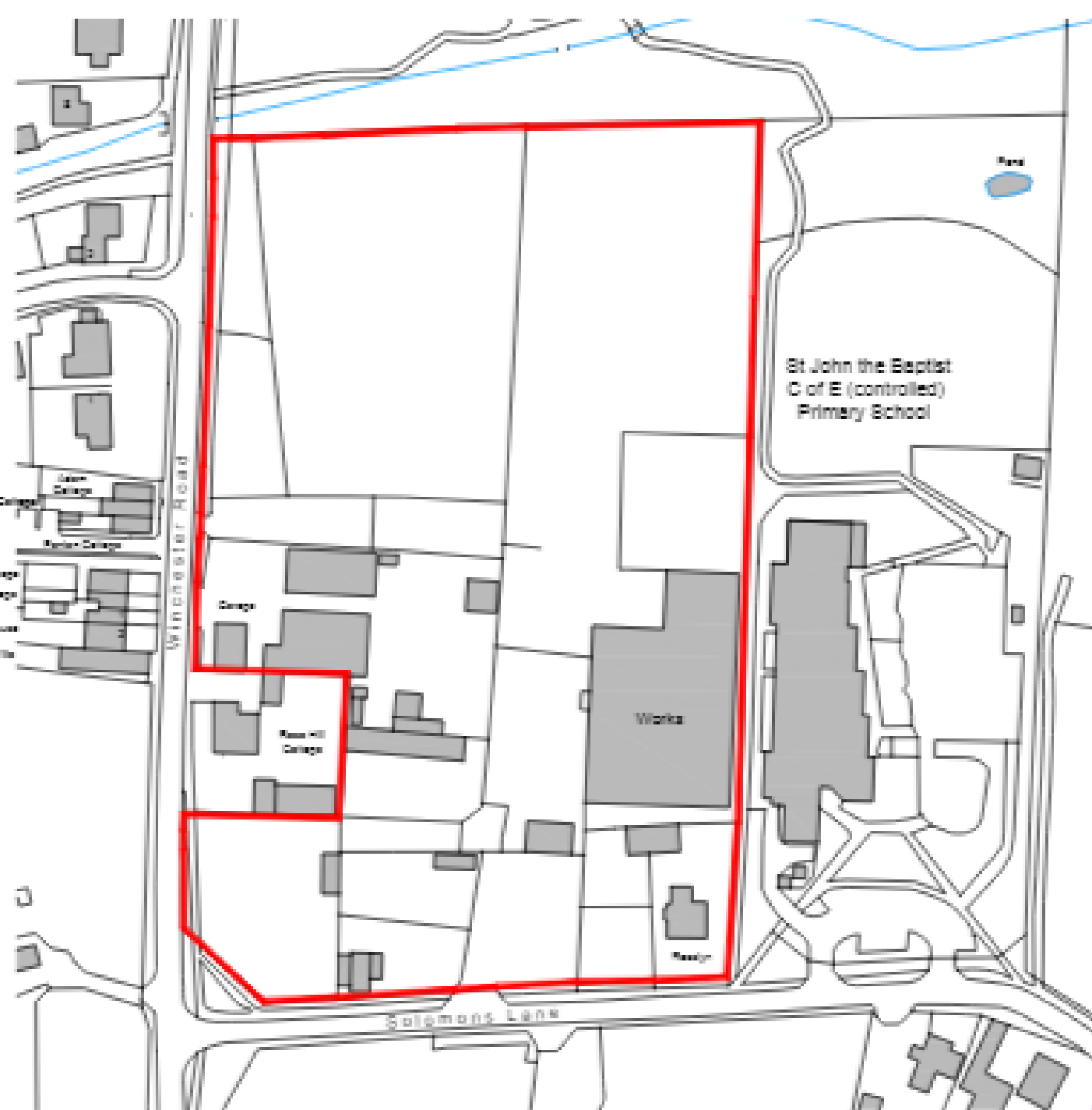


KEY

-  Site boundary
-  Existing site accesses
-  Indicative Swale connections
-  Stream
-  Existing foul drains route
-  Existing local footpaths
-  SSSI
-  Location of potential future open space (WC1)
-  Tree canopies and protection zones
-  TPO row of Conifers - Removed
-  Village Hall
-  Primary School (St John the Baptist-CoE)



The Masterplan



Winchester Road

St John the Baptist
C of E (controlled)
Primary School

Pond

Garage

Residential
Garage

Workshop

Workshop

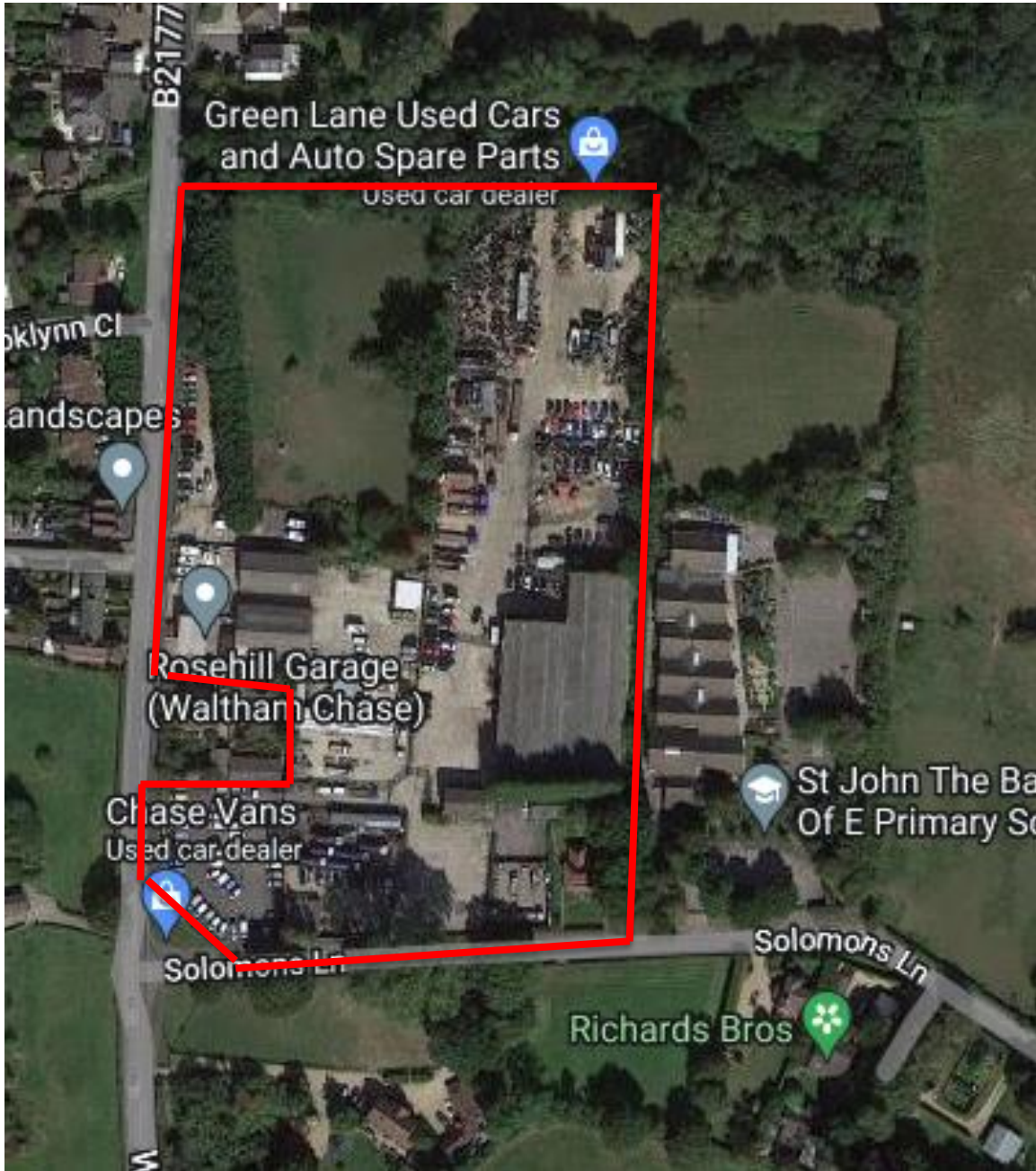
Solemans Lane

Lawn
Garage

Motor
Garage

Residential
Garage

Residential



Green Lane Used Cars
and Auto Spare Parts

Used car dealer

Rosehill Garage
(Waltham Chase)

Chase Vans
Used car dealer

St John The Baptist
Of E Primary School

Solomons Ln

Solomons Ln

Richards Bros

B21777

Brooklyn Cl

Landscapes



The Original Scheme



The Current Scheme



The Proposed Scheme



Street Scene A - A ●



Suburban Club Access Existing Lower 1-8 Cottage Plot 22-23 Plot 19 Suburban Lane



Plot 18 Plot 16 Plot 15 Plot 14 Plot 13 Road Plot 11 Plot 10 Plot 02 Plot 01 Plot 01







1100 LINDSEY DRIVE

Pkg 02

Pkg 01 Storage

Pkg 03

Car Port

Pkg 04

Pool

Open Space

Pool

Pkg 08

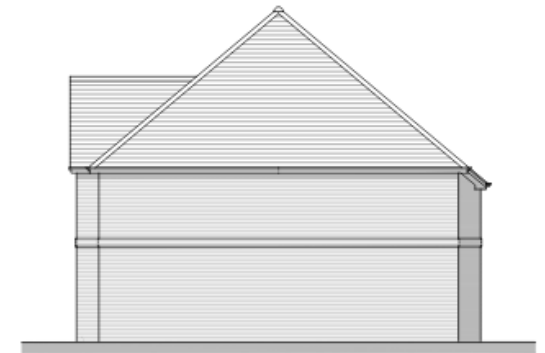
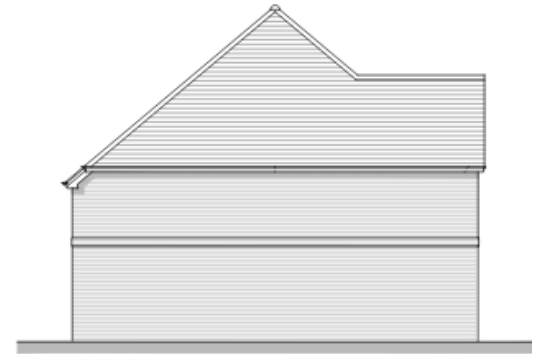


Pkg 05 13

Pkg 05 14

Pkg 05 15





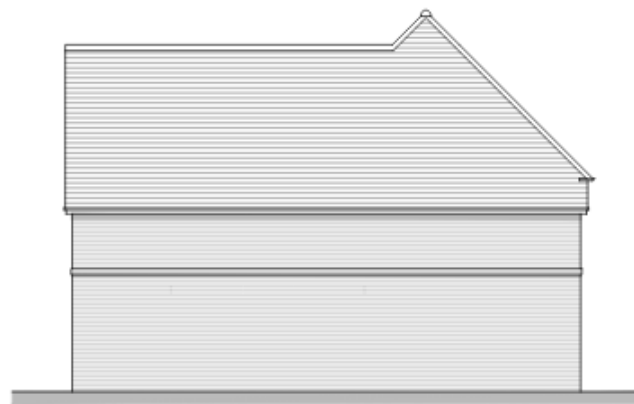
Light industrial building elevations



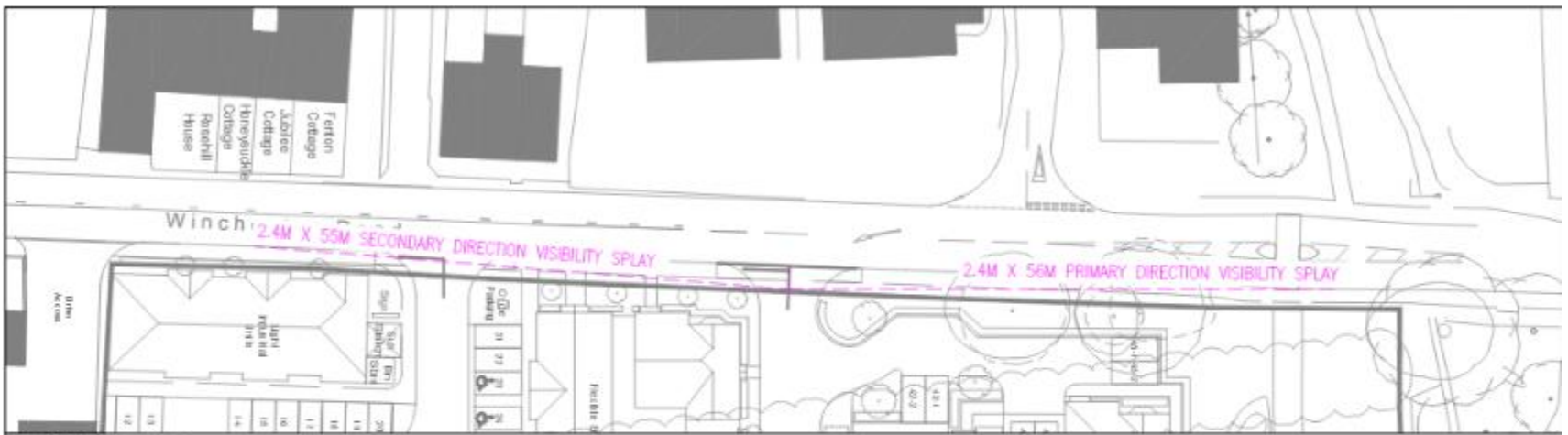


Flexible use
employment building
elevations

Internal facing elevation







NORTHERN ACCESS

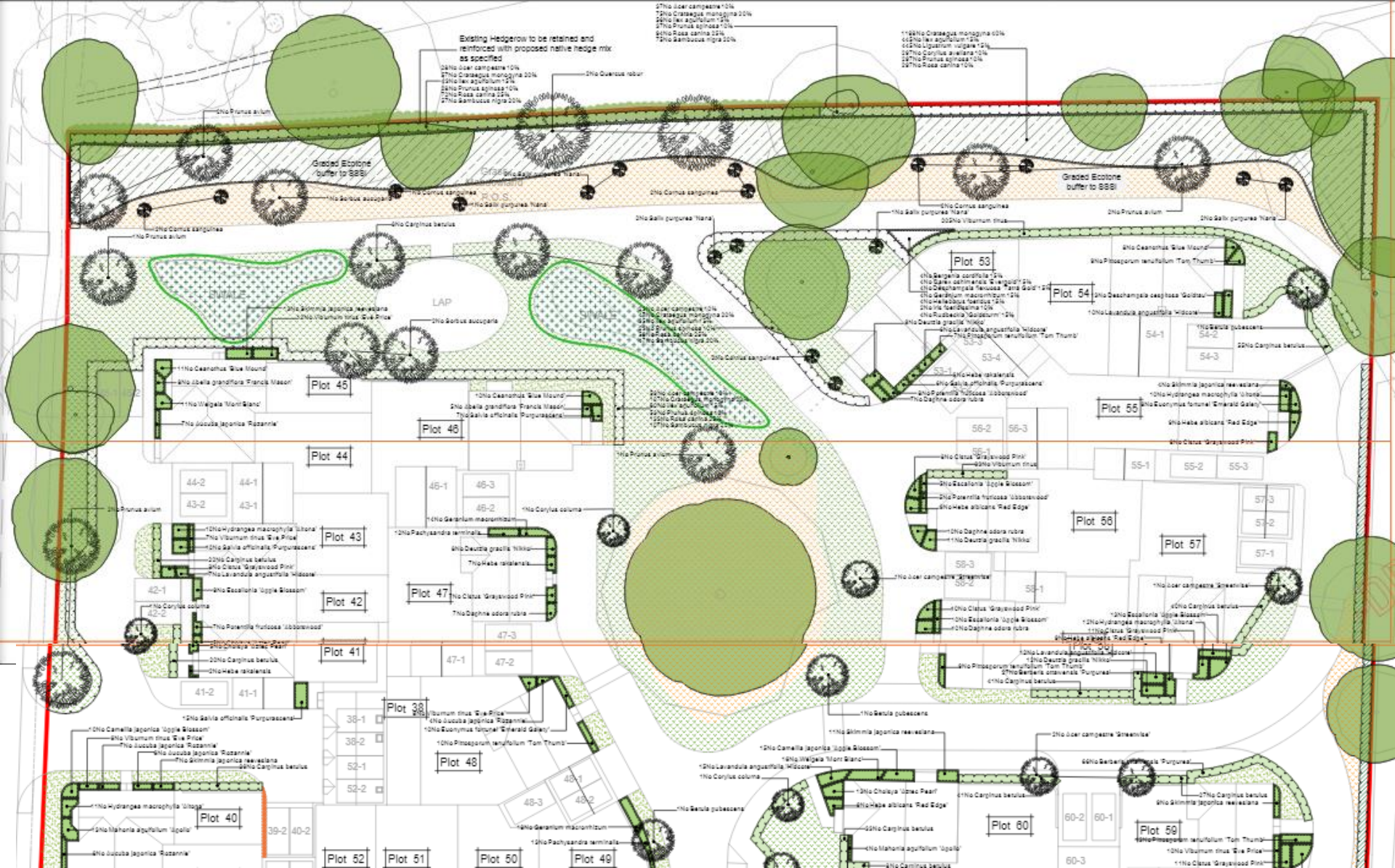


SOUTHERN ACCESS

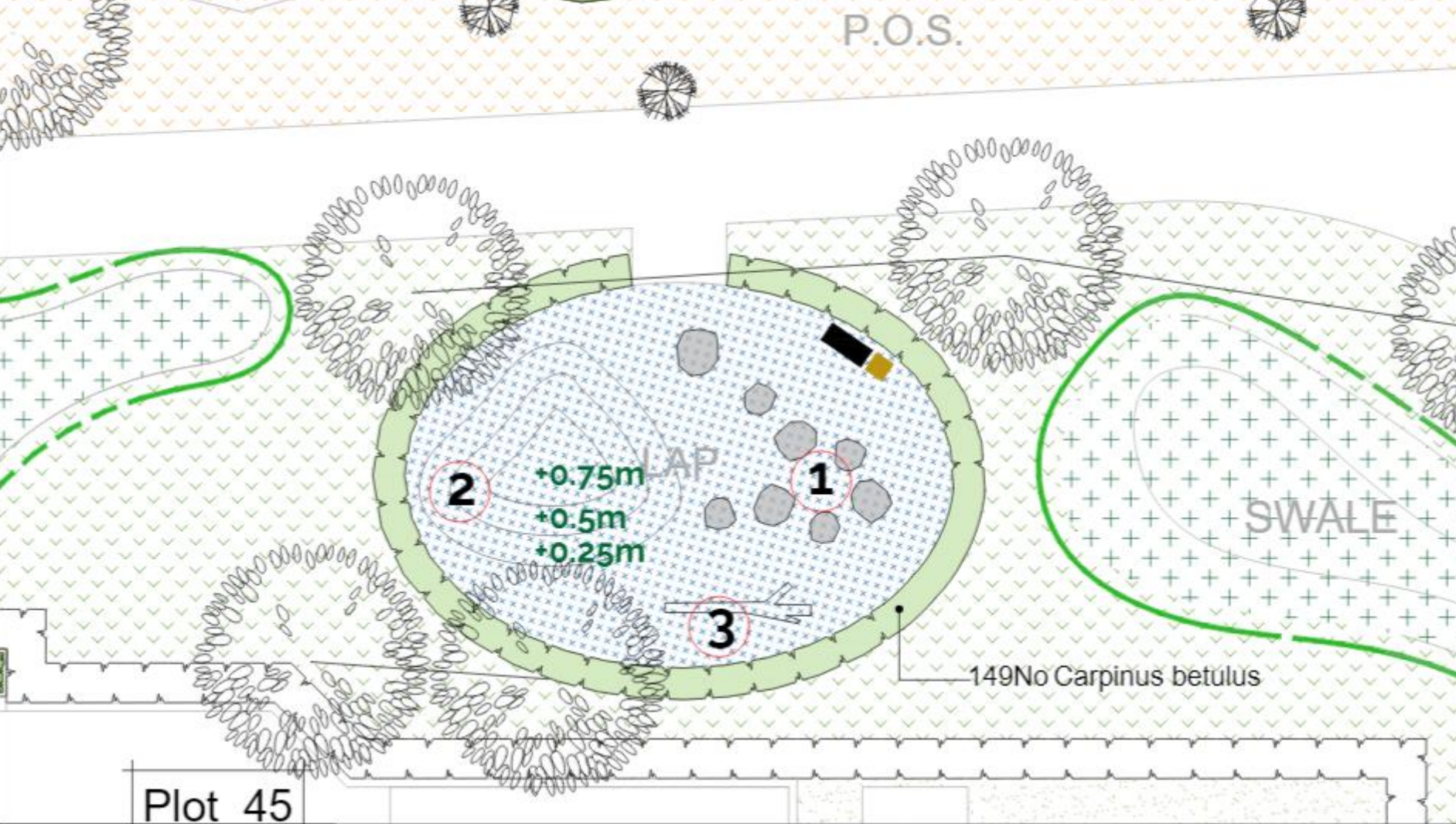




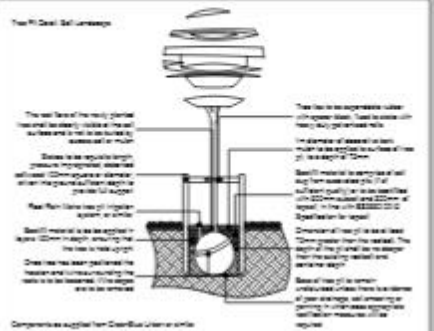
Landscaping plan



Landscaping plan – North end of the site



Plot 45



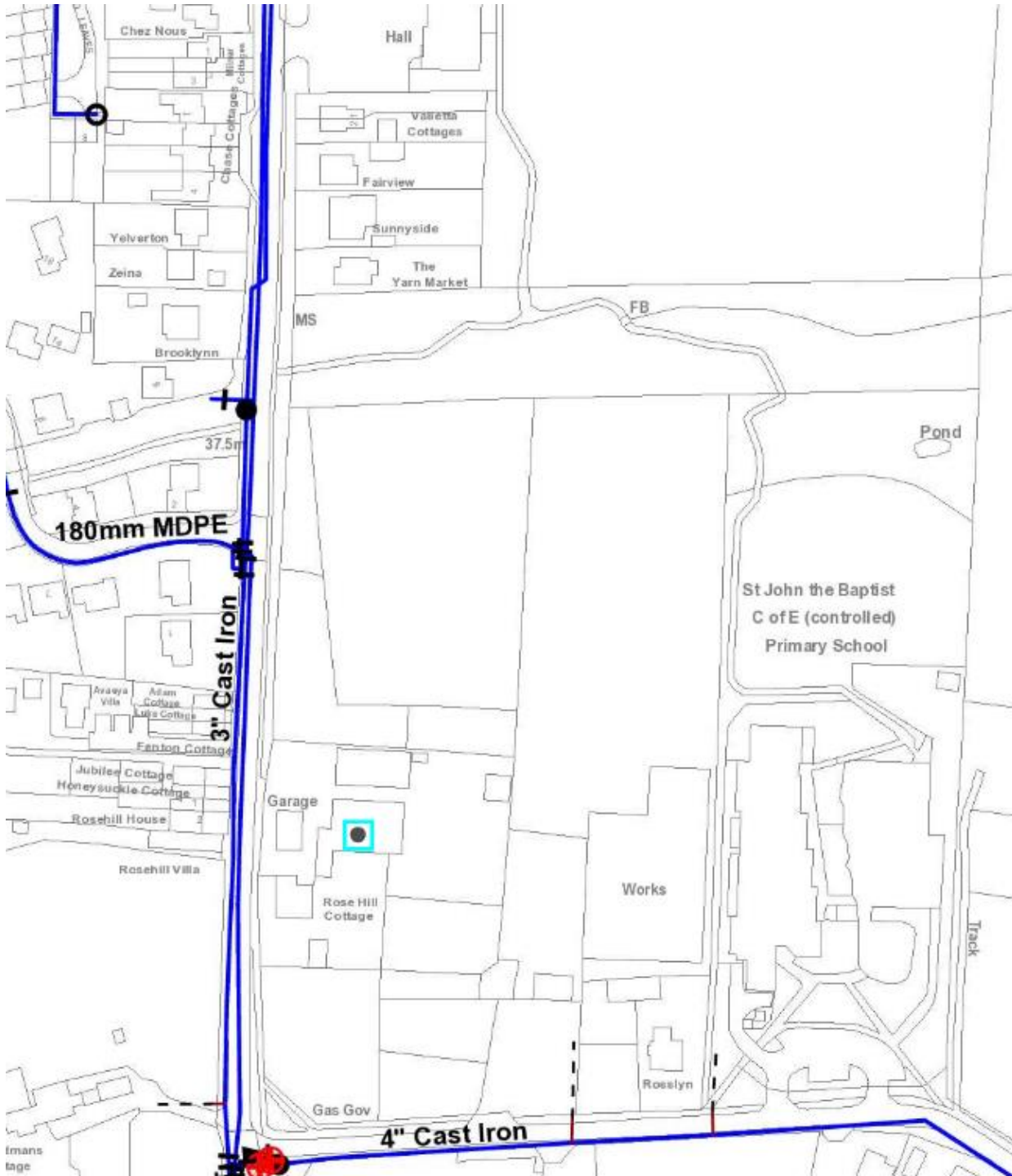
1. Play Boulders



2. Play mounds



3. Play Logs



Foul Drainage Plan -
existing Portsmouth
Water



Foul Drainage Plan -
existing Sothern Water



Biodiversity enhancements Bats-
Habitat box = Green, Bat box = Purple, Bat tiles =Blue



Biodiversity enhancements Birds- Swift box = Red, Sparrow box = Orange, House Martin =Pink, general bird box =Blue



View Down Solomons Lane from the School



View Down Solomons Lane from the south east corner of the site





south east corner of the site,
dwelling to be removed



Morgans Yard Site entrance from
Solomons Lane





Existing site entrance



View Down Solomons Lane from
the south west corner of the site

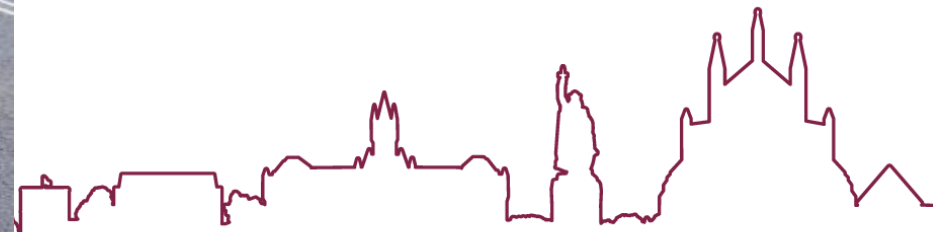




View from the south west corner of the site at the junction of Solomons Lane and Winchester Road



View Down Winchester Road from the north west corner of the site

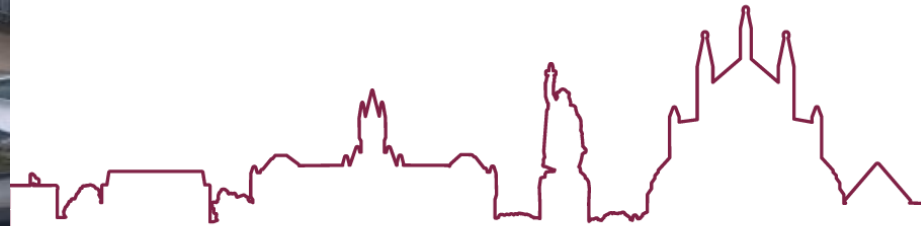




View of the site looking north



View of the site looking south toward Solomons Lane





TPO trees to be removed



View of the site looking north toward the SSSI





View within the site overlooking the Paddock



View of the site along the existing boundary with the SSSI





The existing Oak to be retained within the Public Open Space



TPO trees and existing buildings to be removed





View along the Winchester Road frontage



RECOMMENDATION - APPROVE